

欧款冷冻工作台 COUNTER FREEZER

产品特点 General Features

- 欧洲标准, 柜体尺寸按可放GN1/1份数盘设计
 - 材质采用不锈钢
 - 风冷制冷系统
 - 高密度发泡箱体
 - 欧洲品牌温控器
 - 欧洲品牌压缩机
 - 智能自动除霜系统
 - 门边框装发热丝, 保持柜门不漏冷, 不凝露
 - 内箱采用边角圆弧设计, 易于清洁
 - 带磁性门封条的自动回归门
 - 上下可调搁物架设计
 - 平台柜的深度可定做60cm,65cm,70cm,75cm,80cm
 - 门和抽屉可以互换
- Europe standard GN 1/1 pan designed
 - Stainless steel structure
 - Ventilated cooling system
 - High density insulation body
 - Europe brand controller
 - European brand compressor
 - Smart automatic defrosting
 - Freezer mordels are added heating element in doorframe, keep no fog around doorframe
 - Interior body with round corner, easy to clean
 - Self-closing door with magnetic gaskets (option)
 - Adjustable shelving design
 - The depth of the counter can be customized to 60cm,65cm,70cm,75cm,80cm
 - The door can interchanged by drawers

产品细节 Product Details



1. 欧洲品牌温控器
 2. 上下可调搁物架设计
 3. 门封条可容易清洁和更换
 4. 圆边工作台
 5. 多孔电机散热, 制冷更快
 6. 内箱采用边角圆弧设计, 易于清洁
1. Europe brand controller
 2. Adjustable shelving design
 3. Gaskets can be easily to clean and changed
 4. Round edge counter
 5. Porous motor heat dissipation, faster cooling
 6. Interior body with round corner, easy to clean

产品参数 Technical Data

型号 Model	GN1100BT	GN2100BT	GN3100BT	GN4100BT
产品尺寸 Product size (mm)	925 × 700 × 850	1360 × 700 × 850	1795 × 700 × 850	2230 × 700 × 850
包装尺寸 Package size (mm)	985 × 740 × 910	1420 × 740 × 910	1845 × 740 × 910	2280 × 740 × 910
温度范围 Temperature (°C)	-15~-20	-15~-20	-15~-20	-15~-20
净重 Net weight (Kg)	-	104	114	138
容积 Net capacity (L)	-	260	400	540
额定功率 Rated power (W)	-	588	560	798
制冷类型 Refrigeration type	Ventilated 风冷	Ventilated 风冷	Ventilated 风冷	Ventilated 风冷

产品认证 Product Certification



* 我司有权利更改产品设计和配置, 不会提前告知客户! We have the right to change the product design and configuration without informing customers in advance!

选配 Optional



左置机组
Left unit



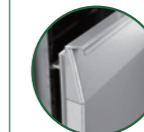
右置机组
Right unit



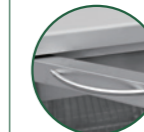
加水盆
Water basin



抽屉
Drawer



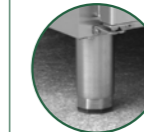
不锈钢门
Stainless Steel door



玻璃门
Glass door



脚轮
Castor



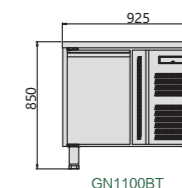
子弹脚
Adjustable feet



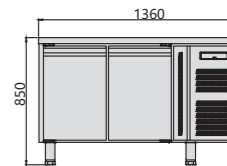
门可以轻易换成抽屉。
Doors can be easily change to be drawers.

平面图 Plan View

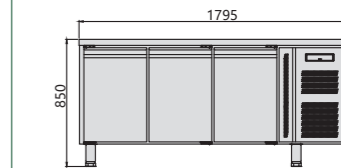
正视图 Front View



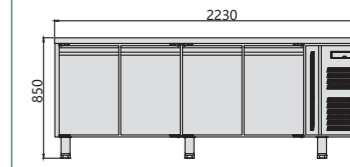
GN1100BT



GN2100BT

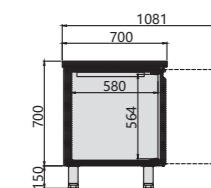


GN3100BT



GN4100BT

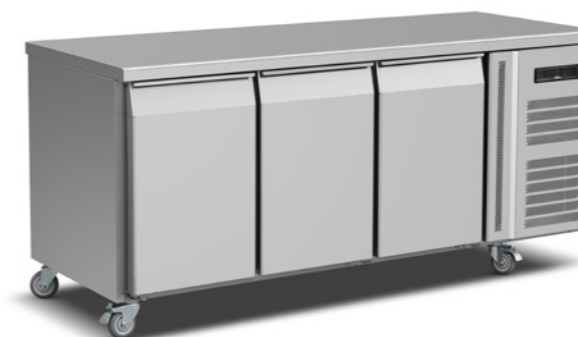
侧视图 Side View



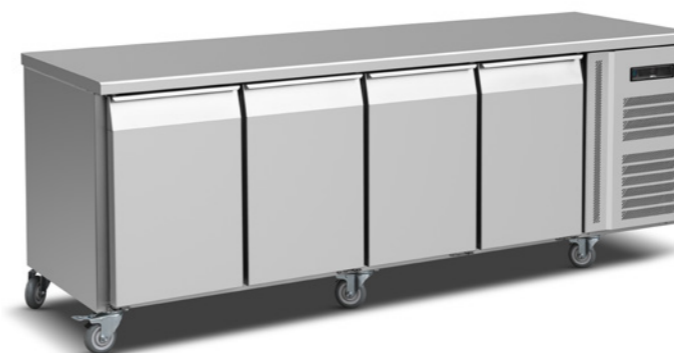
GN1100BT



GN2100BT



GN3100BT



GN4100BT