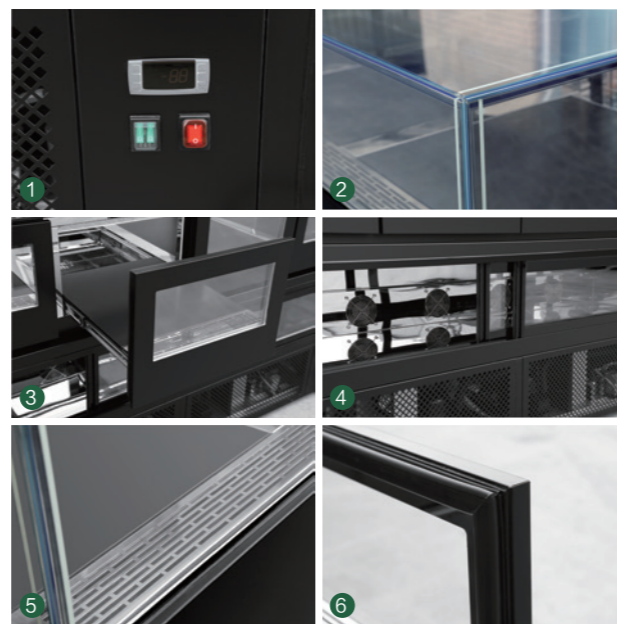


# 精品柜 JEWELRY BOX

## 产品特点 General Features

- 欧洲品牌温控器
  - 欧洲品牌压缩机
  - 强效制冷，风冷无霜
  - 材质采用不锈钢
  - LED灯光照明
  - 钢化加厚玻璃
  - 双层玻璃推拉门
  - 上层展示冷柜，下层储藏冷柜
  - 顶部和前部玻璃无框架45度斜接
  - 优质滑轨抽屉
  - 创新的气流设计可防止产品干燥
  - 自动除霜
- Europe brand controller
  - European brand compressor
  - Strong refrigeration, air cooling and frost free
  - Stainless steel structure
  - LED lighting
  - Tempered thickened glass
  - Double acting door
  - The upper display freezer and the lower storage freezer
  - Top and front glass frameless 45 degree diagonal joint
  - High quality slide drawer
  - Innovative airflow design can prevent product drying
  - Automatic defrosting

## 产品细节 Product Details



- |              |   |
|--------------|---|
| 1. 欧洲品牌温控器   | 1. Europe brand controller                |
| 2. 超白钢化玻璃    | 2. Ultra white tempered glass             |
| 3. 优质滑轨抽屉    | 3. High quality slide drawer              |
| 4. 双层中空玻璃移动门 | 4. Double layer hollow glass movable door |
| 5. 循环冷风孔     | 5. Circulating cold air hole              |
| 6. 磁性门封条     | 6. Magnetic door seal                     |

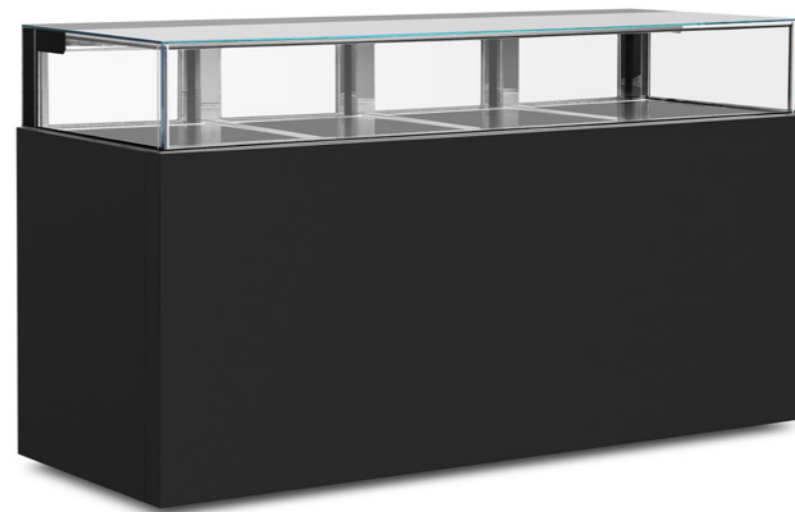
## 产品参数 Technical Data

型号 Model	HM2000
产品尺寸 Product Size (mm)	2000 × 685 × 1100
温度范围 Temperature (°C)	+2~+8
赫兹 Hz	50
额定功率 Power (W)	950
电流 Electric Current(A)	4.2
净重 Net Weight (Kg)	220
电压 Voltage (V)	220
气候等级 Climate Class	T
制冷剂容量 Refrigerant (g)	R290/200

## 产品认证 Product Certification

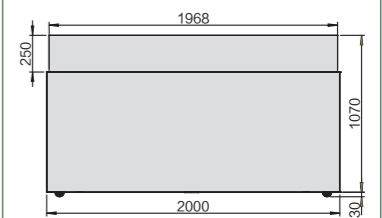


\* 我司有权利更改产品设计和配置，不会提前告知客户！ We have the right to change the product design and configuration without informing customers in advance!

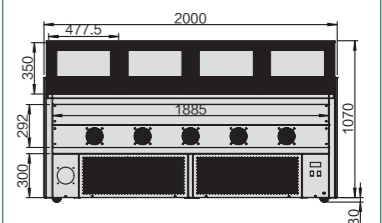


平面图  
Plan View

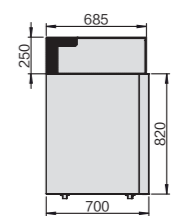
正视图 Front View



背视图 Back view



侧视图 Side View



优质不锈钢面板  
High quality stainless steel panel

- 乱纹不锈钢  
Random pattern stainless steel
- 银色拉丝不锈钢  
Silver stainless steel
- 黑色拉丝不锈钢  
Black stainless steel
- 白镜面不锈钢  
White mirror stainless steel
- 黑镜面不锈钢  
Black mirror stainless steel