

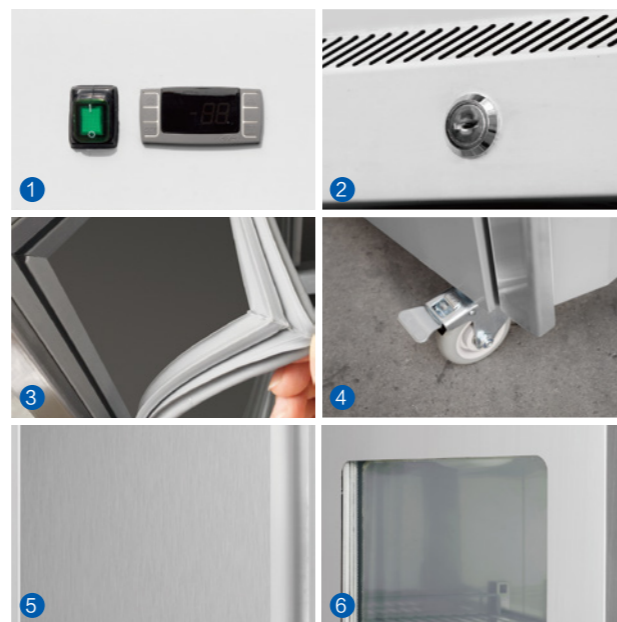
# 烤盘立式高柜 BAKERY UPRIGHT

## 产品特点 Product features

- 欧洲标准, 柜体尺寸按可放600\*400mm烤盘设计
- 材质采用不锈钢
- 风冷制冷系统
- 高密度发泡箱体
- 欧洲品牌温控器
- 欧洲品牌压缩机
- 智能自动除霜系统
- 门边框装发热丝, 保持柜门不漏冷, 不凝露
- 内箱采用边角圆弧设计, 易于清洁
- 带磁性门封条的自动回归门
- 上下可调搁物架设计
- 平台柜的深度可定做60cm,65cm,70cm,75cm,80cm

- Europe standard 600\*400mm tray designed
- Stainless steel structure
- Ventilated cooling system
- High density insulation body
- Europe brand controller
- Europe brand compressor
- Smart automatic defrosting
- Freezer mordels are added heating element in doorframe, keep no fog around doorframe
- Interior body with round corner, easy to clean
- Self-closing door with magnetic gaskets
- Adjustable shelving design
- The depth of the counter can be customized to 60cm,65cm,70cm,75cm,80cm

## 产品细节 Product details



- |               |   |
|---------------|---|
| 1. 欧洲品牌温控器    | 1. Europe brand controller                    |
| 2. 配有门锁       | 2. Equipped with door lock                    |
| 3. 门封条容易清洁和更换 | 3. Gaskets can be easily to clean and changed |
| 4. 可换子弹脚或脚轮   | 4. Adjustable feet or castor is available     |
| 5. 材质采用不锈钢    | 5. Stainless steel structure                  |
| 6. 可换玻璃门      | 6. Glass door is available                    |

## 产品参数 Product parameters

| 型号 Model                | PA800TN          | PA800BT          |
|-------------------------|------------------|------------------|
| 产品尺寸 Product size (mm)  | 740 × 990 × 2040 | 740 × 990 × 2040 |
| 包装尺寸 Package size (mm)  | R134a/R290       | R404a/R290       |
| 温度范围 Temperature (°C)   | +2~+8            | -18~-22          |
| 净重 Net weight (Kg)      | 121              | 126              |
| 容积 Net capacity (L)     | 610              | 610              |
| 额定功率 Rated power (W)    | 328              | 815              |
| 制冷类型 Refrigeration type | Ventilated 风冷    | Ventilated 风冷    |

## 产品认证 Product certification



\* 我司有权利更改产品设计和配置, 不会提前告知客户! We have the right to change the product design and configuration without informing customers in advance!



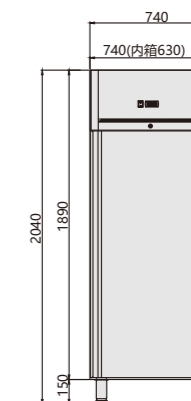
R134a / R290 TN: +2~+8°C  
R404a / R290 BT: -18~-22°C



欧洲标准, 柜体尺寸按可放600\*400mm烤盘设计。  
Europe standard 600\*400mm tray designed.

平面图  
Plan View

正视图 Front View



侧视图 Side View

