

# 欧款冷冻带抽屉工作台 COUNTER FREEZER WITH DRAWERS

## 产品特点 Product features

- 欧洲标准, 柜体尺寸按可放GN1/1份数盘设计
  - 材质采用不锈钢
  - 风冷制冷系统
  - 高密度发泡箱体
  - 欧洲品牌温控器
  - 欧洲品牌压缩机
  - 智能自动除霜系统
  - 门边框装发热丝, 保持柜门不漏冷, 不凝露
  - 内箱采用边角圆弧设计, 易于清洁
  - 带磁性门封条的自动回归门
  - 上下可调搁物架设计
  - 平台柜的深度可定做60cm,65cm,70cm,75cm,80cm
  - 门和抽屉可以互换
- Europe standard GN 1/1 pan designed
  - Stainless steel structure
  - Ventilated cooling system
  - High density insulation body
  - Europe brand controller
  - European brand compressor
  - Smart automatic defrosting
  - Freezer mordels are added heating element in doorframe, keep no fog around doorframe
  - Interior body with round corner, easy to clean
  - Self-closing door with magnetic gaskets
  - Adjustable shelving design
  - The depth of the counter can be customized to 60cm,65cm,70cm,75cm,80cm
  - The door can interchanged by drawers

## 产品细节 Product details



1. 抽屉可放标准GN1/1份数盘
  2. 内箱采用边角圆弧设计, 易于清洁
  3. 圆边工作台
1. The drawer can hold standard gn1 / 1 copies
  2. Interior body with round corner, easy to clean
  3. Round edge counter

## 产品参数 Product parameters

型号 Model	GN4120BT	GN4130BT	GN4140BT	GN4180BT
产品尺寸 Product size (mm)	2230 × 700 × 850	2230 × 700 × 850	2230 × 700 × 850	2230 × 700 × 850
包装尺寸 Package size (mm)	2280 × 740 × 910	2280 × 740 × 910	2280 × 740 × 910	2280 × 740 × 910
温度范围 Temperature (°C)	-15~-20	-15~-20	-15~-20	-15~-20
净重 Net weight (Kg)	158	162	175	198
容积 Net capacity (L)	540	540	540	540
额定功率 Rated power (W)	798	798	798	798
制冷类型 Refrigeration type	Ventilated 风冷	Ventilated 风冷	Ventilated 风冷	Ventilated 风冷

## 产品认证 Product certification



\* 我司有权利更改产品设计和配置, 不会提前告知客户! We have the right to change the product design and configuration without informing customers in advance!

R404a / R290 BT: -15~-20°C



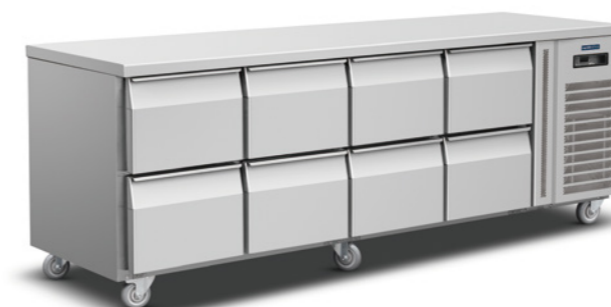
GN4120BT



GN4130BT



GN4140BT



GN4180BT

选配 Optional



左置机组  
Left unit

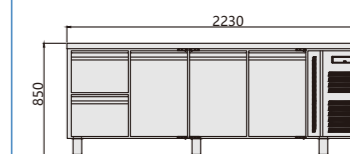


右置机组  
Right unit

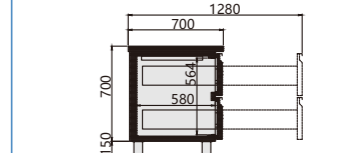


加水盆  
Water basin

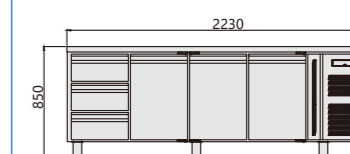
平面图  
Plan View



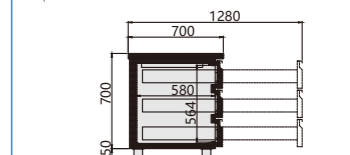
GN4120BT



GN4130BT



GN4140BT



GN4180BT