

开口沙拉柜 OPEN TOP TABLE SALAD COUNTER

产品特点 Product features

- 欧洲标准, 柜体尺寸按可放GN1/1份数盘设计
- 材质采用不锈钢
- 风冷制冷系统
- 高密度发泡箱体
- 欧洲品牌温控器
- 欧洲品牌压缩机
- 智能自动除霜系统
- 内箱采用边角圆弧设计, 易于清洁
- 带磁性门封条的自动回归门
- 上下可调搁物架设计
- 易拆卸机组, 方便维修
- 平台柜的深度可定做60cm,65cm,70cm,75cm,80cm
- 门和抽屉可以互换

- Europe standard GN 1/1 pan designed
- Stainless steel structure
- Ventilated cooling system
- High density insulation body
- Europe brand controller
- European brand compressor
- Smart automatic defrosting
- Interior body with round corner, easy to clean
- Self-closing door with magnetic gaskets
- Adjustable shelving design
- Easy to disassemble the unit, convenient for maintenance.
- The depth of the counter can be customized to 60cm,65cm,70cm,75cm,80cm
- The door can interchanged by drawers

产品参数 Product parameters

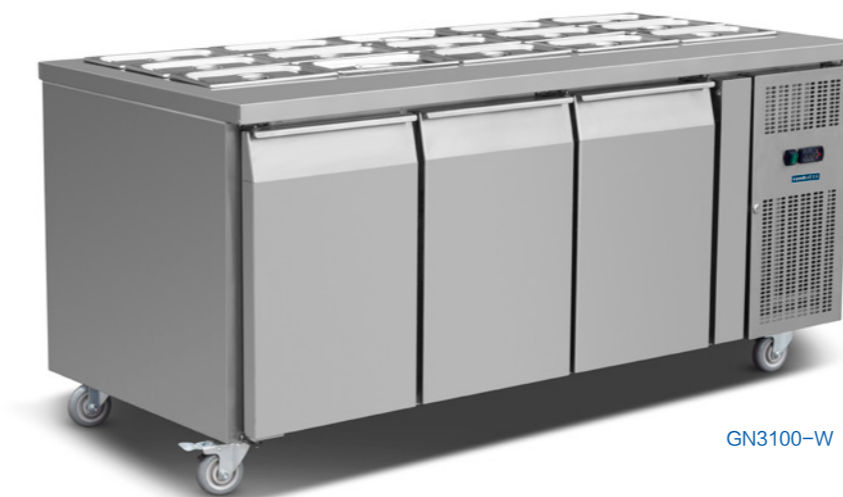
型号 Model	GN2100-W	GN3100-W	GN4100-W
产品尺寸 Product size (mm)	1360 × 700 × 850	1795 × 700 × 850	2230 × 700 × 850
包装尺寸 Package size (mm)	1420 × 740 × 910	1845 × 740 × 910	2280 × 740 × 910
温度范围 Temperature (°C)	+2~+8	+2~+8	+2~+8
净重 Net weight (Kg)	92	113	134
容积 Net capacity (L)	260	400	540
额定功率 Rated power (W)	350	360	470
制冷类型 Refrigeration type	Ventilated 风冷	Ventilated 风冷	Ventilated 风冷

产品细节 Product details

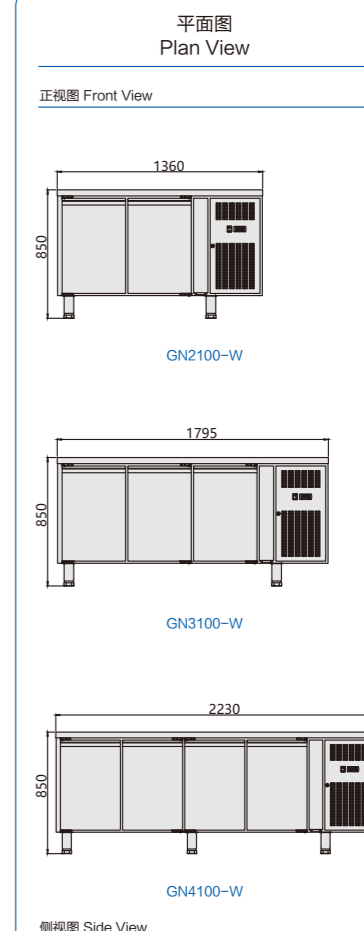
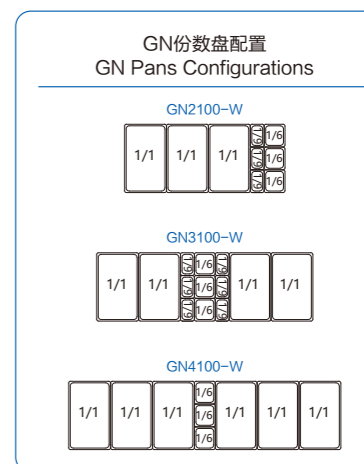


- 1、欧洲品牌温控器
- 2、上下可调搁物架设计
- 3、欧洲标准, 柜体尺寸按可放GN1/1份数盘设计

1. Europe brand controller
2. Adjustable shelving design
3. Europe standard GN 1/1 pan designed



GN3100-W



产品认证 Product certification



* 我司有权利更改产品设计和配置, 不会提前告知客户! We have the right to change the product design and configuration without informing customers in advance!