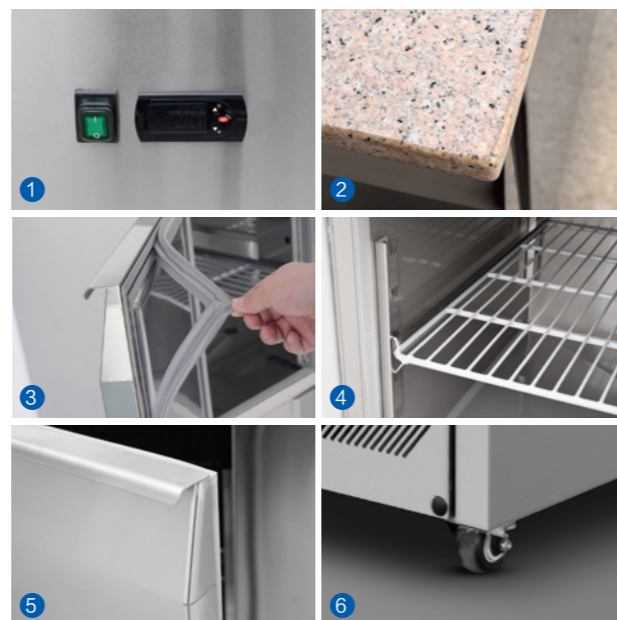


沙拉台大理石台面 SALADETTE WITH GRANITE TOP

产品特点 Product features

- 天然大理石台面, 台面宽度700mm
- 一体化结构, 符合现代卫生标准的保温厚度, 高密度发泡
- 直冷制冷系统, 可定做风冷
- 材质采用不锈钢
- 内置GN1/1大小搁物架, 可自由调节高度
- 欧洲品牌温控器 & 欧洲品牌压缩机
- 内部圆角设计, 易于清理
- 底部自动排水系统
- 可选万向脚轮, 方便移动
- 内部全铜管设计
- 可定做LED灯
- 可更换磁性门封条
- 方便更换抽屉和玻璃门
- 门和抽屉可以互换
- Granite top
- High density insulation for cooling system
- Static or ventilated system are available
- Stainless steel structure
- GN1/1 shelf size for operation
- Europe brand controller & Europe brand compressor
- Round corner hygiene
- Inner bottom use bend line to drain pipe
- Castor is available
- Top quality cooper pipe built-in
- Led light is available
- Magnetic gasket can be changed without tools
- Door easy to change Drawers or Glass door
- The door can interchanged by drawers

产品细节 Product details



1. 欧洲品牌温控器
2. 优质大理石台面
3. 门封条容易清洁和更换
4. 可调节搁物架
5. 门把手设计
6. 万向耐磨脚轮, 方便移动

1. Europe brand controller
2. High quality marble countertop
3. Gaskets can be easily to clean and changed
4. Adjustable shelving
5. Door handle design
6. Durable casters for easy movement

产品参数 Product parameters

型号 Model	S901 Granite Top	S903 Granite Top 2 × GN1/2
产品尺寸 Product size (mm)	903 × 700 × 870	1368 × 700 × 870
冷媒类型 Refrigerant	R134a / R290	R134a / R290
温度范围 Temperature (°C)	+2~+8	+2~+8
净重 Net weight (Kg)	110	156
容积 Net capacity (L)	250	390
额定功率 Rated power (W)	204	321
制冷类型 Refrigeration type	Static 直冷	Static 直冷

产品认证 Product certification



* 我司有权利更改产品设计和配置, 不会提前告知客户! We have the right to change the product design and configuration without informing customers in advance!



S901 Granite Top



S903 Granite Top 2 × GN1/2

大理石颜色 Marble color



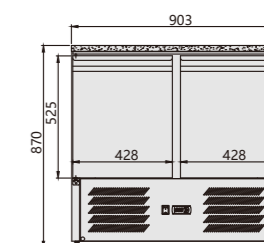
黑色 Black

米黄 Beige

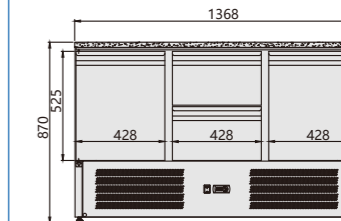
灰色 Grey

平面图 Plan View

正视图 Front View

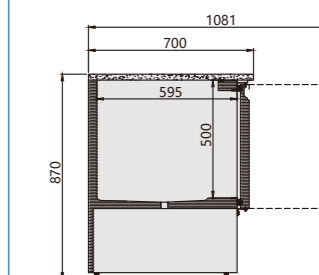


S901 Granite Top

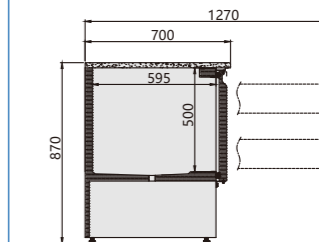


S903 Granite Top 2 × GN1/2

侧视图 Side View



S901 Granite Top



S903 Granite Top 2 × GN1/2